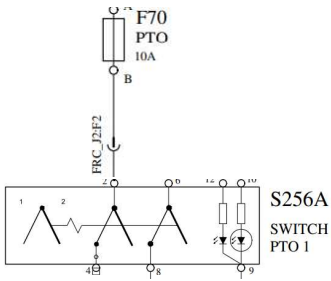


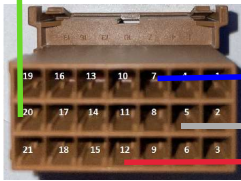
Cummins PTO wiring With 2500 Allison Options 2 and 4



One Leg to Relay and the other to Cavity 20 Wire N130CM

To Cavity 7 Wire N162

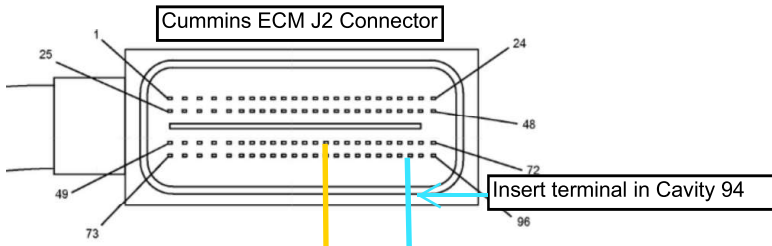
Allison BB Connector



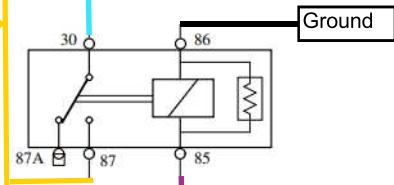
To a Good Ground

To Cavity 5 Wire N103

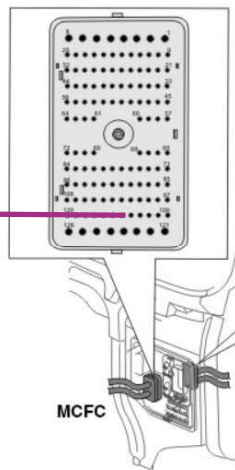
One leg from Cavity 12 To PTO Solenoid



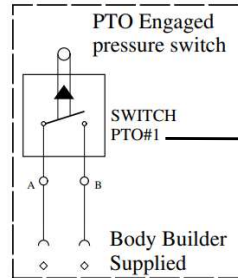
Splice in with Cavity 62



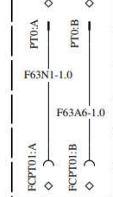
From MCFC 114



Plug PTO pressure switch into the PTO Connector in the left frame rail near PTO



BBM-PK18
ALLISON 2000 (INFRAME BOC)



ALLISON 2000 (BEHIND EFRC)

